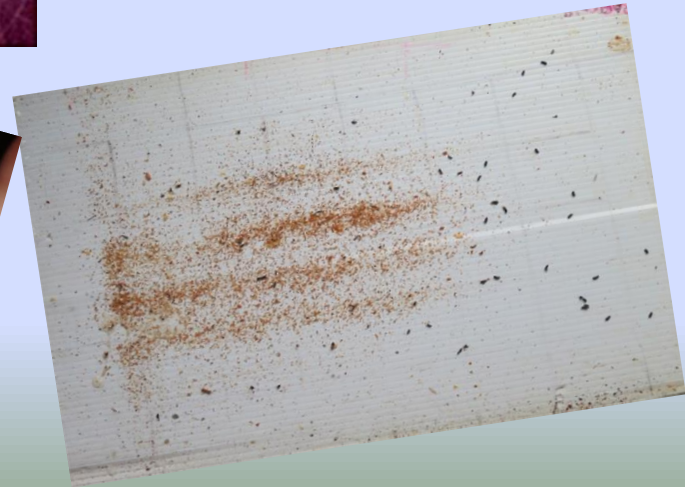
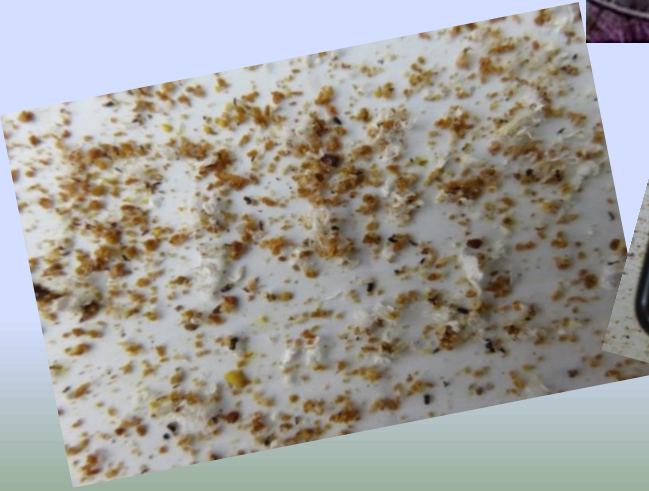


Reading Collection Boards

Judy Scher



Screened Bottom Board



Screened Bottom Board



Bottom Board above ground level



Collection Board in Back of Bottom Board



Coat collection board with oil

Check activity of bees WITHOUT going into hive

- Observe activity of bees when they are flying
- Observe activity of bees via collection board in all seasons

Check activity by observation of bees

Spring/Summer/Fall

- Bees should be going in and out, being checked by guard bees
- Sometimes standing with their abdomens in the air – location pheromone-
- Sometimes taking out dead bees and debris



-Bees bringing in pollen

- Are bees fighting at the entrance? - Indication of robbing
- Are there lots of dead bees at the entrance and on the ground in front of the hive?
 - indication of disease

What Can You See on Collection Board?

Assess strength of hive

Observe cluster area – centered?

Evidence of Wax Moths

Evidence of Yellow Jackets

Evidence of Mice

Observe Varroa mite drop (Winter)

Collection Board Challenge

- Reading sticky board is tricky between winter and early spring:
- Accumulation of moldy dead bees, old cappings, wax moth feces is normal unless bees have had opportunity to clean out.

View from bottom with flash light



Photo from Beaver Creek Bees

If lots of moldy dead bees, etc. put board above screen or clean out if weather permits.



Photo from Lane Honey Bee Farms

Assess strength of hive

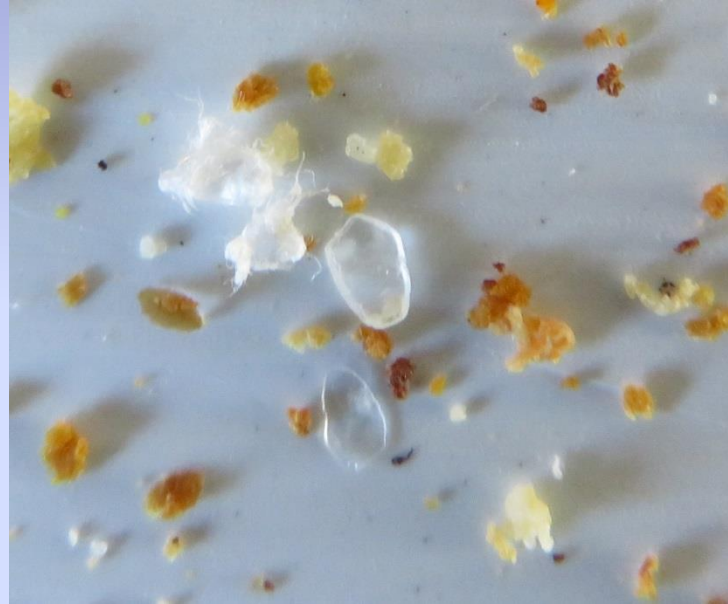


High Activity for February



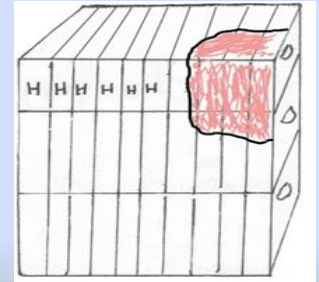
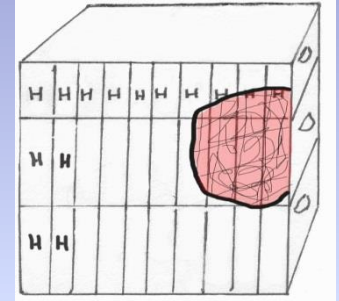
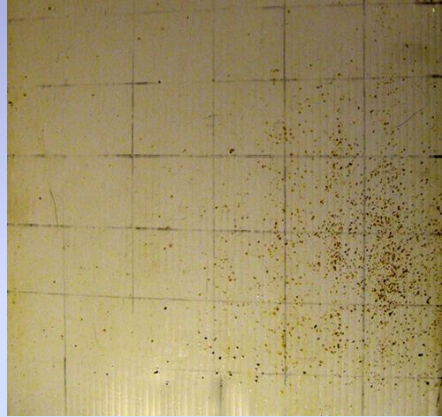
Weak hive in January

Assess strength of hive



High Activity for February – Bees producing wax scales

Observe cluster area



Un-centered Winter Hive

Uncentered Brood Frames

If not centered, move honey frames from opposite side of cluster and relocate next to cluster side so cluster is centered.

Do this on a dry day at least 50 degrees F when bees are flying

Evidence of wax moths



Wax moth feces

Evidence of wax moths



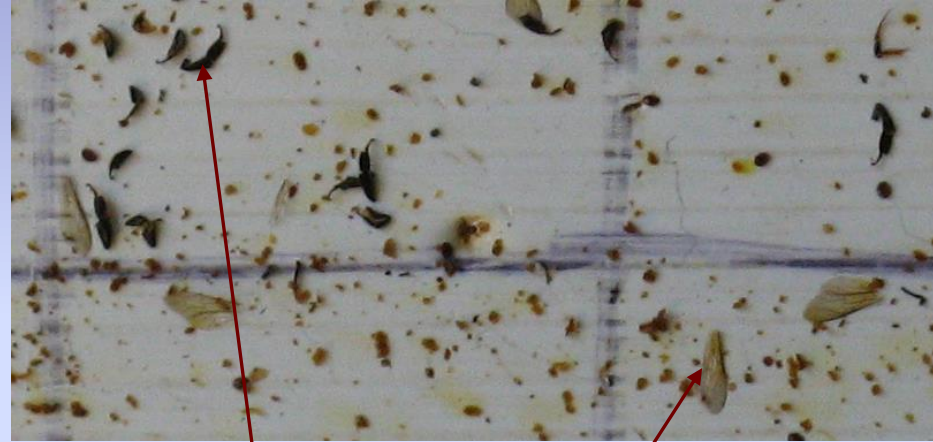
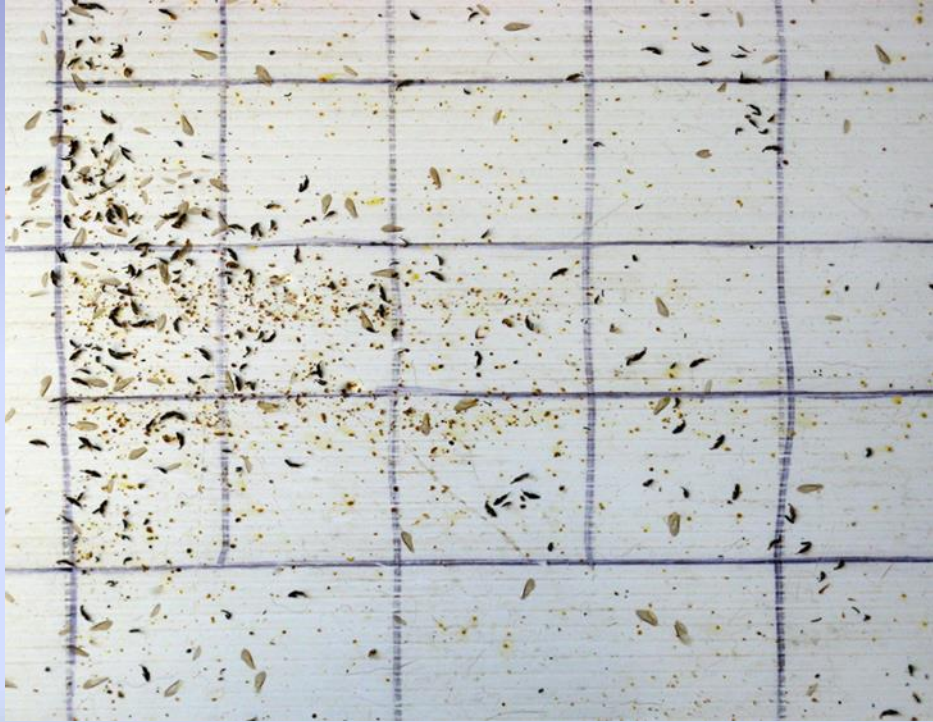
Wax moth larva casting

Wax moths will be killed as soon as weather warms up and bees move through the hive

Evidence of mice



Evidence of Yellow Jackets Summer



Yellowjackets eat bees of all ages leaving legs and wings of bees

Evidence of Yellow Jackets

Winter/Spring



Yellow Jackets wintered over in hive
workers and/or hibernating queen

Mice!

Yes, mice eat honey and bees!

Yellow Jackets, Robber Bees, Mice

Use Entrance Reducer



Entrance Reducer



Robber Screens



YJs are smart enough to find their way over the top of this screen.

Varroa mite drop

Use collection board in Winter

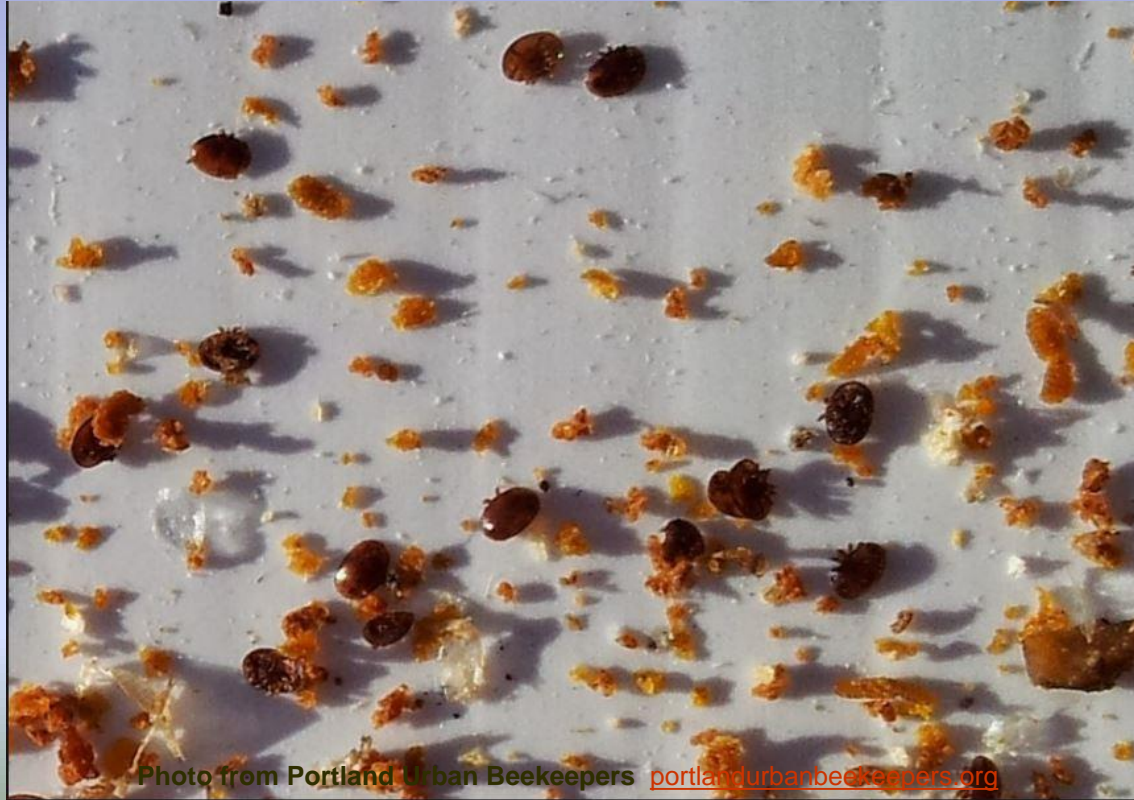


Photo from Portland Urban Beekeepers portlandurbanbeekeepers.org

Other Things on Sticky Board

- Pollen, propolis
- Beetles – all kinds
- Ants!
- Sugar and waxed paper from patties

A hand is holding a black rectangular frame over a speckled, light-colored surface. The frame is tilted slightly to the right. The background is a solid light blue color.

THE

END