

Is it time for a reign change?



Overthrowing the queen



Why?

Who?

When?

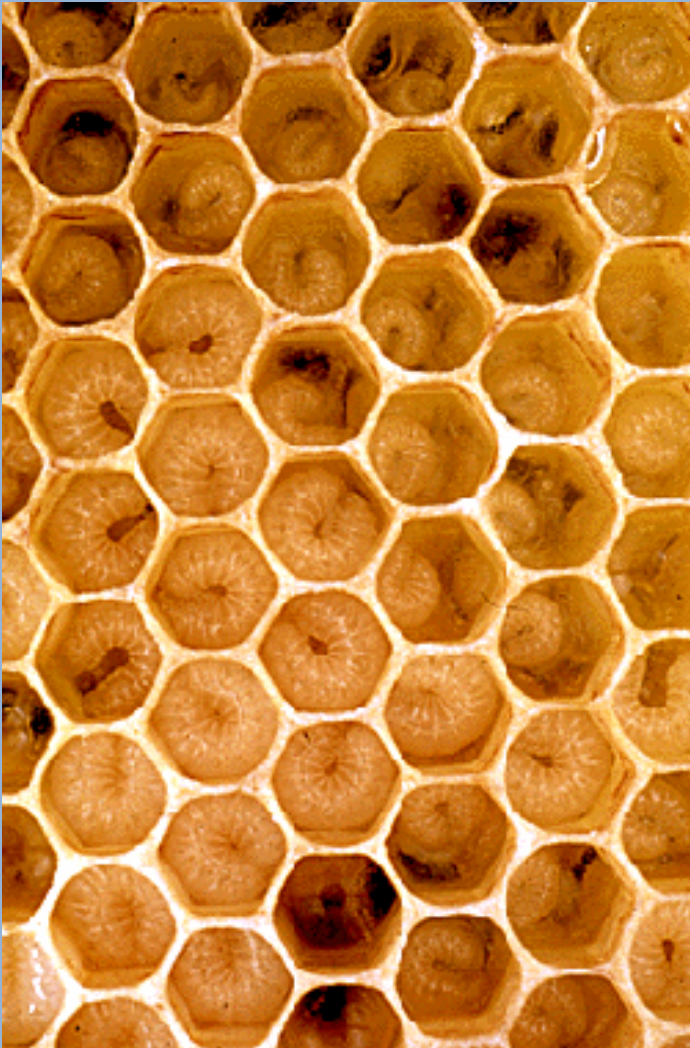
How?

Why initiate a reign change?



- Poor performance
- Defense disposition
- Desire to improve Varroa resistance
- Reduce susceptibility to disease
- Reduce swarming tendency

Why? Performance Decreases with Age

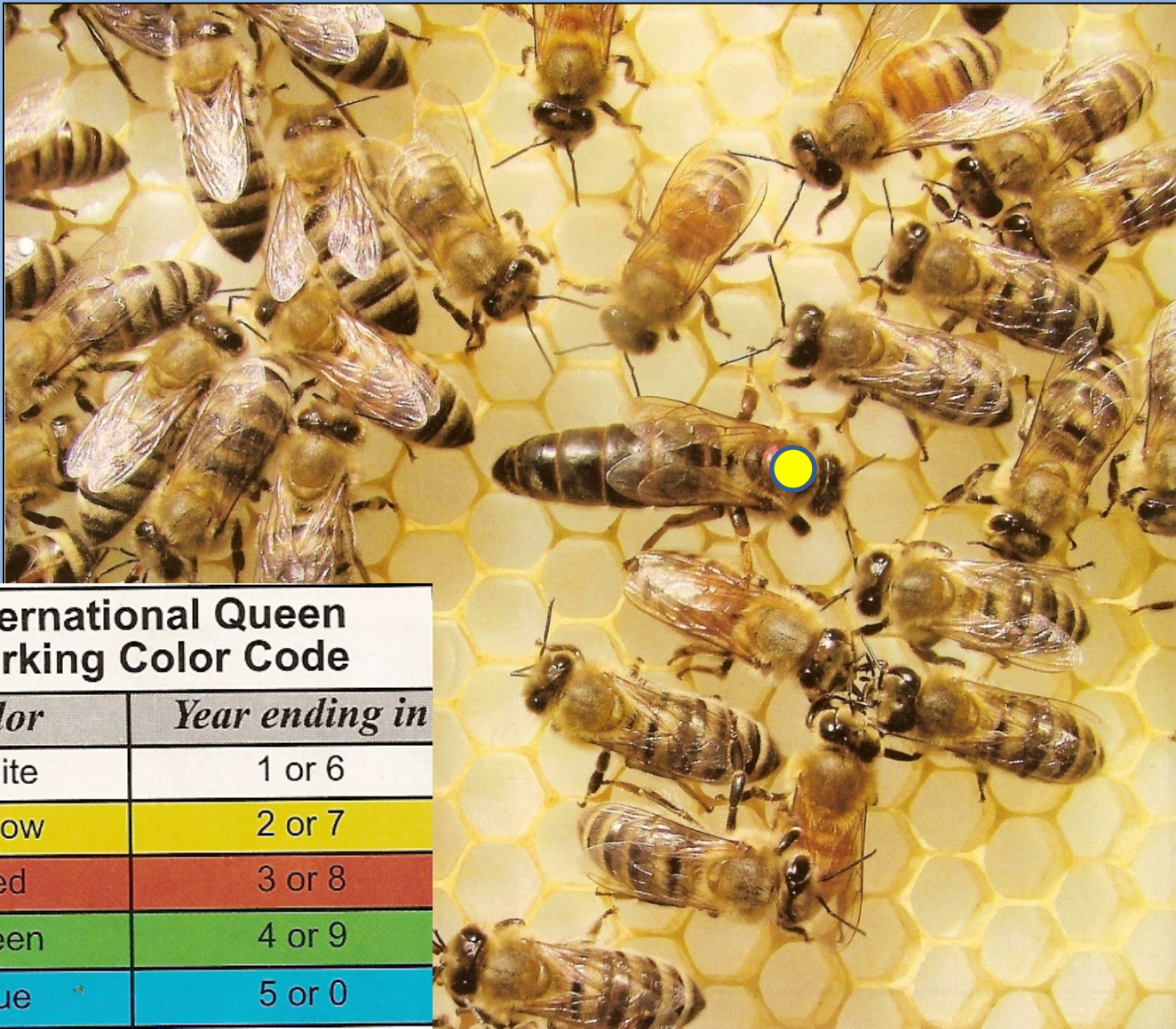


THE OLD QUEENS
RETIREMENT HOME



With all those billions of offspring, you'd think at least one would come to visit.

Will you raise great bees?



International Queen Marking Color Code

<i>Color</i>	<i>Year ending in</i>
White	1 or 6
Yellow	2 or 7
Red	3 or 8
Green	4 or 9
Blue	5 or 0

Why? Temperament



Why? Improve Varroa resistance

Your Source for Locally Mated Queens!

When you hear "buy local", it really pertains to bees. My breeder queens come from local stock and have survived multiple winters. They have been proven superior and have been selected for survivability, gentleness and honey production.

I have both Italians and Carniolan's available. These queens were grafted from specially selected queens, and have been allowed to lay for a minimum of 14 days. This allows me to ensure you receive only the best queens.

1-25 \$32.00 Contact: Thad Starr, 541-954-7856
25+ \$30.00 starr954@msn.com



Old Sol Apiaries
Queen Production & Agricultural Pollination since 1997

HOME FAQ ABOUT US OLD SOL FRIENDS CONTACT BLOG SHOP

NUCLEUS COLONIES – 2017

Online ordering coming soon! Until then, feel free to call us and reserve your spot.

541-582-2337

Pick up in the Rogue Valley April April 7, April 22, May 6, and May 20. Time slots are "first come, first served".

Nucleus colony with mated, verified **Survivor Stock** queen



Why? Susceptibility to Disease

I sure hope
this vet has
had
experience
treating
foulbrood!



What a
foul odor!

Why? Swarming Tendency



Swarm Queen – Royalty or Wanabee?



Who? Selecting a Successor?



Local Hybrid Queens

Your Source for Locally Mated Queens!

When you hear "buy local", it really pertains to bees. My breeder queens come from local stock and have survived multiple winters. They have been proven superior and have been selected for survivability, gentleness and honey production.

I have both Italians and Carniolan's available. These queens were grafted from specially selected queens, and have been allowed to lay for a minimum of 14 days. This allows me to ensure you receive only the best queens.

1-25 \$32.00 Contact: Thad Starr, 541-954-7856
25+ \$30.00 starr954@msn.com



Old Sol Apiaries
Queen Production & Agricultural Pollination since 1997

HOME FAQ ABOUT US OLD SOL FRIENDS CONTACT BLOG SHOP

NUCLEUS COLONIES – 2017

Online ordering coming soon! Until then, feel free to call us and reserve your spot.

541-582-2337

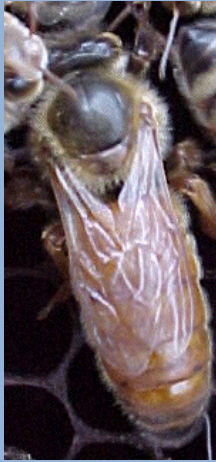
Pick up in the Rogue Valley April April 7, April 22, May 6, and May 20. Time slots are "first come, first served".

Nucleus colony with mated, verified **Survivor Stock** queen



Hybrids come from these queens

Minnesota
Hygienic



Super Yellow Italian

Carniolan



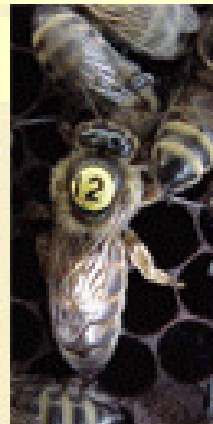
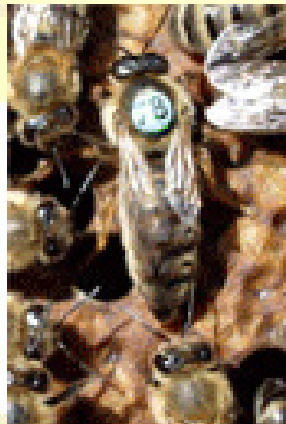
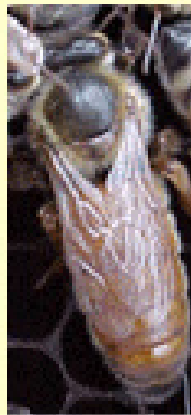
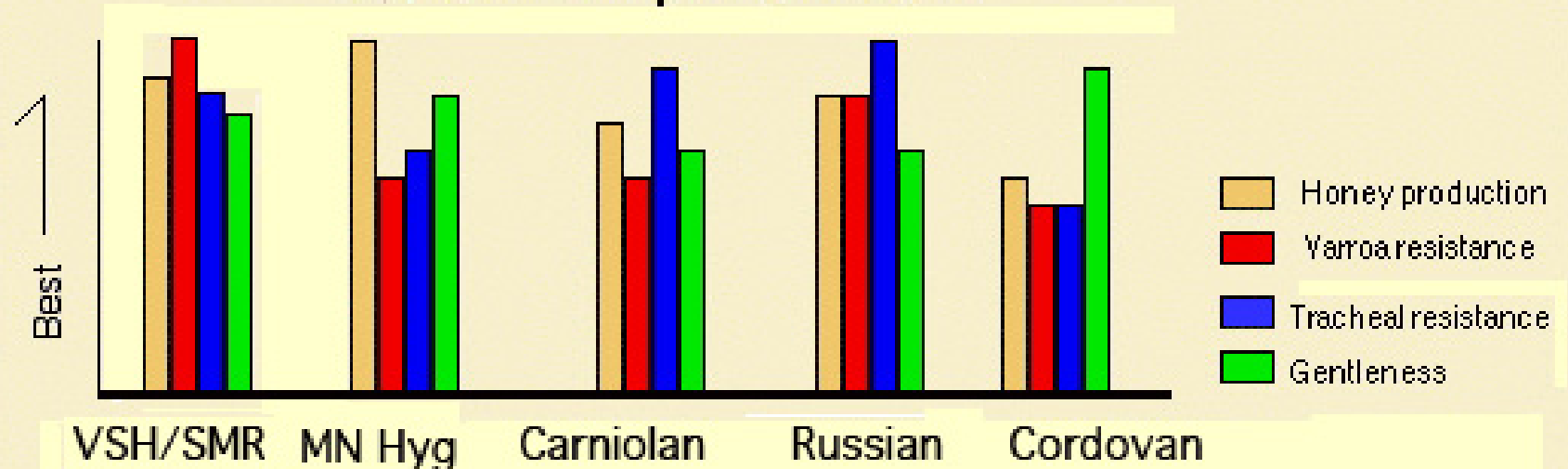
SMR



Russian



Queen Comparison Chart



Source: Glenn Apiaries

Pros and Cons of Italians

Pros



- Good beginner bee
- Readily builds comb
- Light color worker, with dark queen makes queen locating easier
- Wonderful foragers
- Only moderate tendency to swarm
- Relatively easy and calm to work with
- Resistant to European Foul Brood
- Strong cleaning behavior
- Lower range propolis producer

Cons



- Brood rearing continues after honey flow ceases
- Builds a great deal of brace and burr comb
- Highly prone to drifting
- More likely to starve during long winters
- Short distance foragers, causing tendency to rob
- Slow spring buildup
- Susceptible to Disease

Pros and Cons of Carniolans

Pros

- Earlier morning forager
- Forages on colder and wetter days than most other bees
- Overwinters well on small stores, as queen stops laying in the fall
- Explosive build up in early spring
- Exceptionally gentle and easy to work
- May interrupt brood rearing during times of drought
- Does not typically propolize heavily
- Creates less brace and burr comb
- Crosses well with other varieties



Cons

- Likely to swarm unless carefully managed (no room to expand)
- If pollen is scarce brood rearing greatly diminishes



Pros and Cons of Russians

Pros



- Resistant to [Varroa Mites](#)
- Resistant to [Tracheal Mite](#)
- Quick Spring build up
- Winter tolerant

Cons

- Brood rearing is highly dependent on forage availability
- Increased tendency to swarm
- Tend to propolize



Pros and Cons of Minnesota Hygienic Bees

Pros

- Good honey producer
- More resistant to American Foul Brood and Chalkbrood
- Hygienic behavior



Cons

- Runny; queen tends to run rather than stay calm
- Continuous brood rearing
- continues after honey flow ceases
- More likely to starve during long winters
- Poor flight orientation, highly prone to drifting
- Aggressive foragers, causing tendency to rob



Pros and Cons of SMR/VSH Bees

Pros



- Hygienic

Cons

Prone to abscond



Runny

Less productive



Pros and Cons of Raising your own queen

Walk away split

Pro	Con
Save money	Takes more time to get first brood 
Locally adapted 	Some risk involved. 80% success rate
Potentially superior queens	
Rewarding learning experience	

“ As Mark Twain might have said, “The difference between queens you buy and queens you raise yourself is almost always the difference between light and lightening.”

Kim Flottum



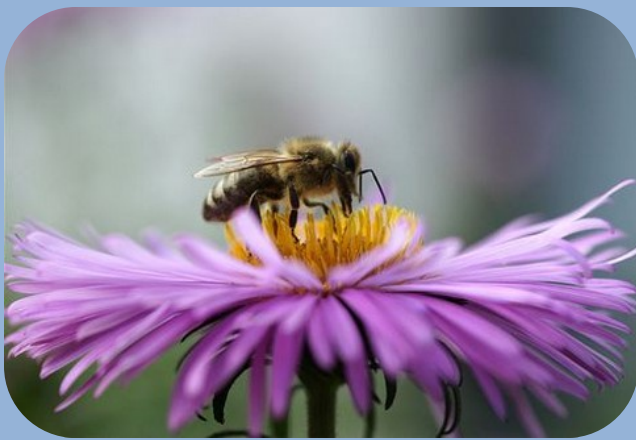
When to roll out the royal carpet?



Spring

- Nectar flow means bees are in a good mood and more accepting of a new queen
- Colony smaller in spring than later making it easier to find the queen
- Queens are available
- Have time to try again should first attempt fail





Disadvantages

- Larger population makes finding old queen a challenge
- Acceptance of new queen more difficult because bees in a more protective mood

Fall

Advantages

- Commercial queens more readily available
- Queens likely to be better mated
- Fall queen more likely to overwinter

Urgent

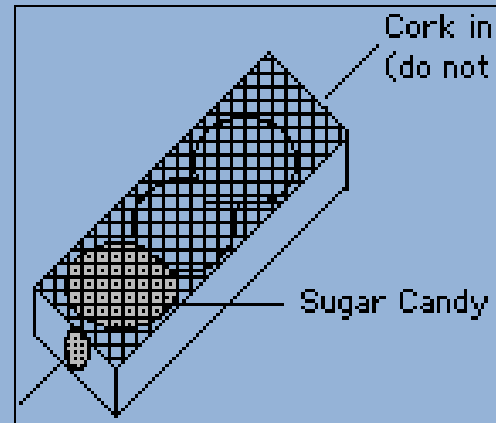
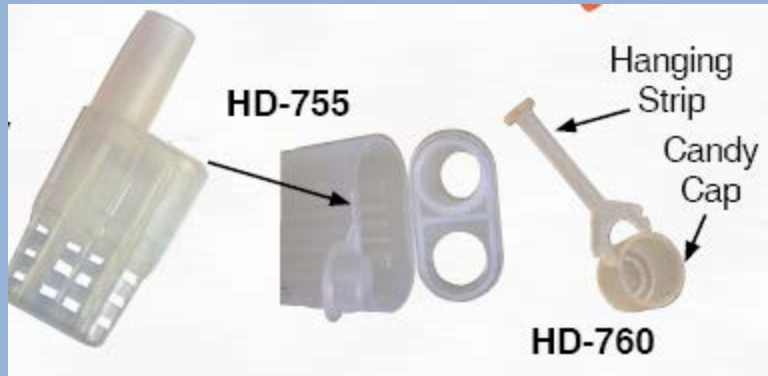


- Queenless
- Won't accept new queen once laying workers are present
- Take hive apart and distribute to other colonies

How to roll out the royal carpet



Cages for introducing purchased queens



Introducing Royalty

Push in Cage

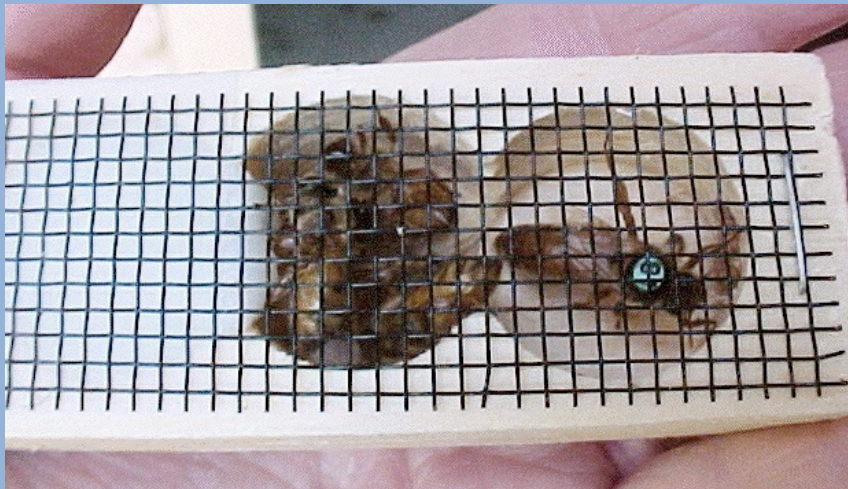
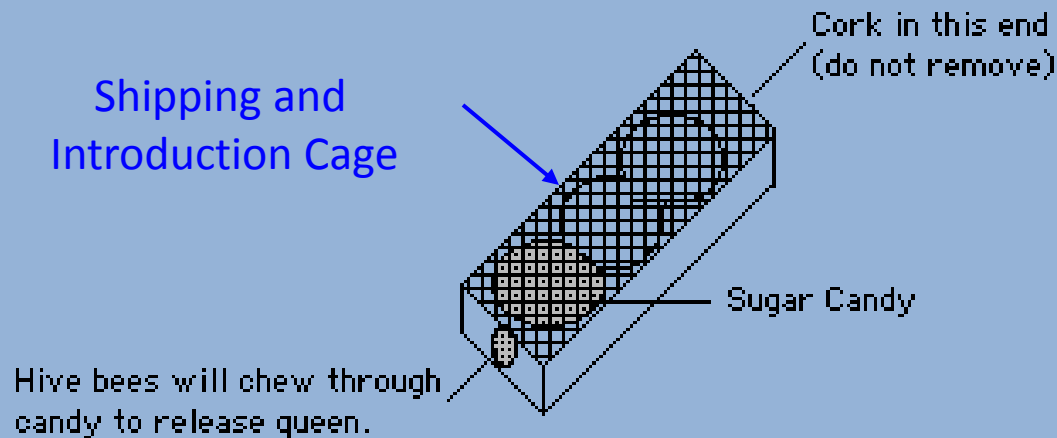


- It's a queen cage made out of hardware cloth, shaped like a square, about 1/2 - 3/4 inch tall with the bottom missing.
- It is pressed down over sealed comb with the queen inside, holding the queen within the cage.
- Be sure that no other bees are in the cage, only the queen.

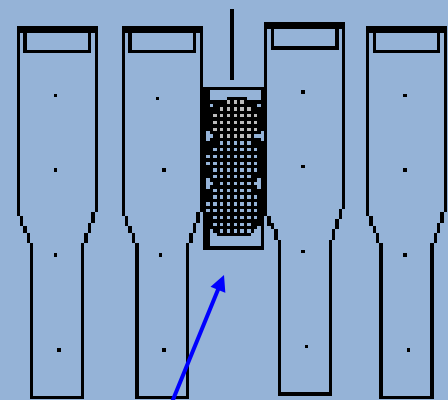
Introducing Royalty

Benton Cage (must remove frame to use)

Shipping and
Introduction Cage



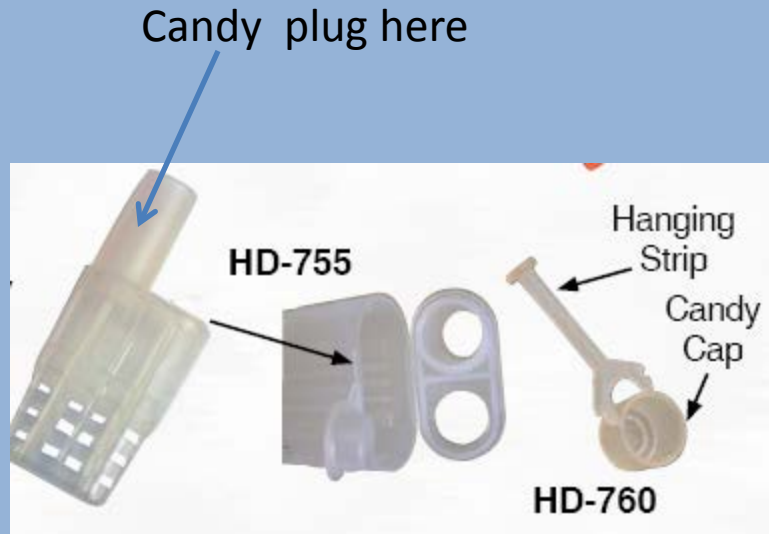
Candy end up.
Hole is not blocked.



Placement of the cage
between the brood frames

Introducing Royalty

JZ BZ Cage



- Easy introduction; do not have to remove frame
- Cage re-usable
- Improved ventilation
- Improved spacing
- Improved access to queen

Introducing Royalty California Cage



- Easy introduction; do not have to remove a frame
- Cage re-usable
- Improved ventilation
- Improved spacing
- Improved access to queen

Speaking of tape....

Correct



Incorrect



Care of the new queen

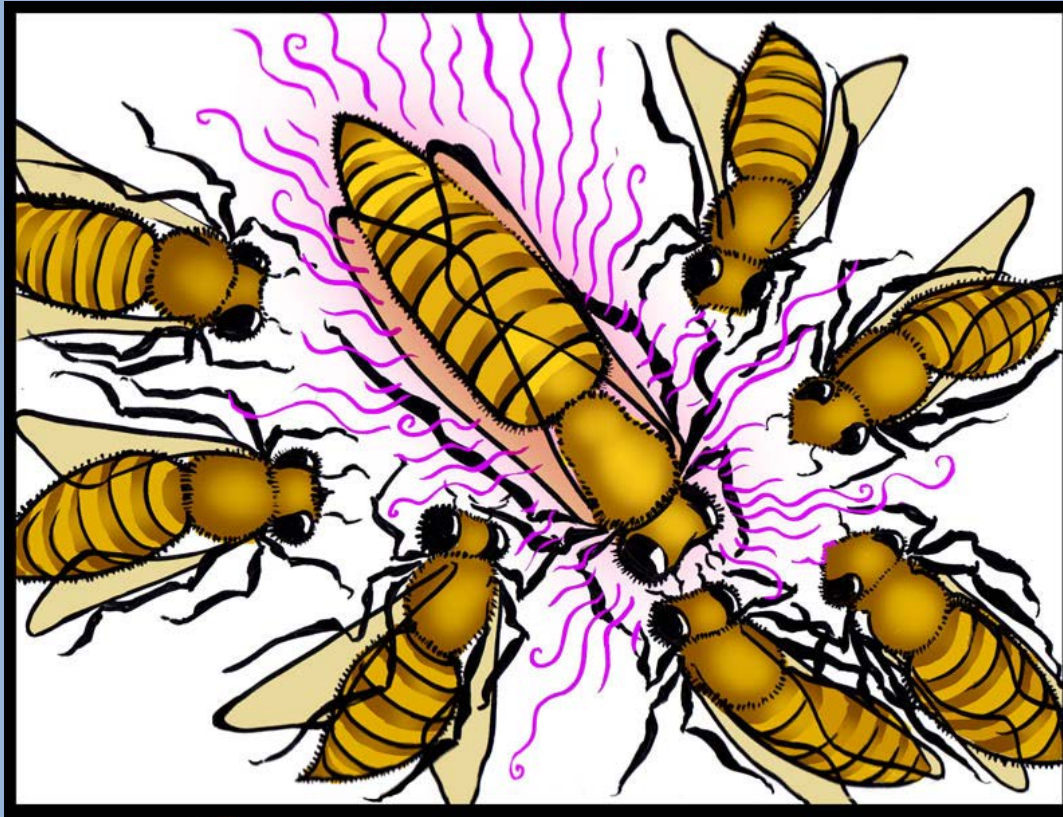
- Give her a drop of water every few hours until she is installed (NO HONEY OR SUGAR WATER)
- Keep her at room temperature away from drafts and in a dark environment
- If you can not introduce her on the day you receive her, continue to give her water and try to get her into her new home ASAP



Queen Introduction Step by Step

Re-queening an established hive

Step 1: Find old queen and remove her



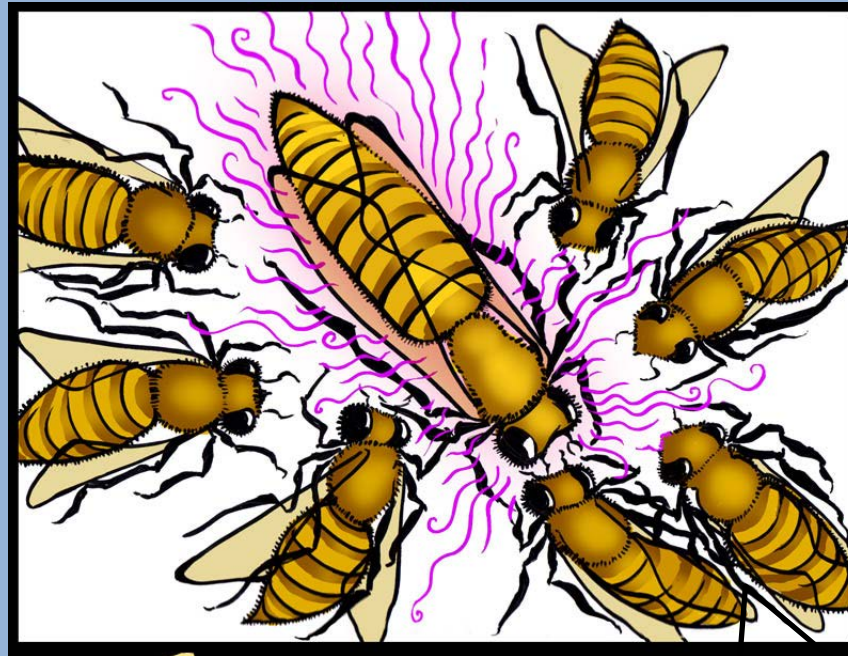
Feed hive during introduction and for several days after release **even during a honey flow**

Tips for finding the queen

She's on the
frame with most
bees
and eggs

Marked
queens make
it easier

Queen
moves
slowly and
purposely
through the
brood area



Use little or no
smoke; too
much and
she'll leave the
nursery

Look for
retinue
or wake

**I found
her!**

Finding the queen by
looking at the “big” picture
If the queen is not moving,
you will see a retinue.



Les Crowder



Kathy Garvey



- Use as little smoke as possible
- Have the sun to your back
- Separate the brood boxes
- Starting on one side of brood chamber examine frames sequentially
- As inspect frames, hold them over the brood box
- Lean inspected frame against brood box or put in an empty brood box



- As you remove each brood frame, look for quick movement on adjacent frame (queen runs from light)
- She is usually on a frame with lots of uncapped brood and eggs

Last resort for tough to find queens



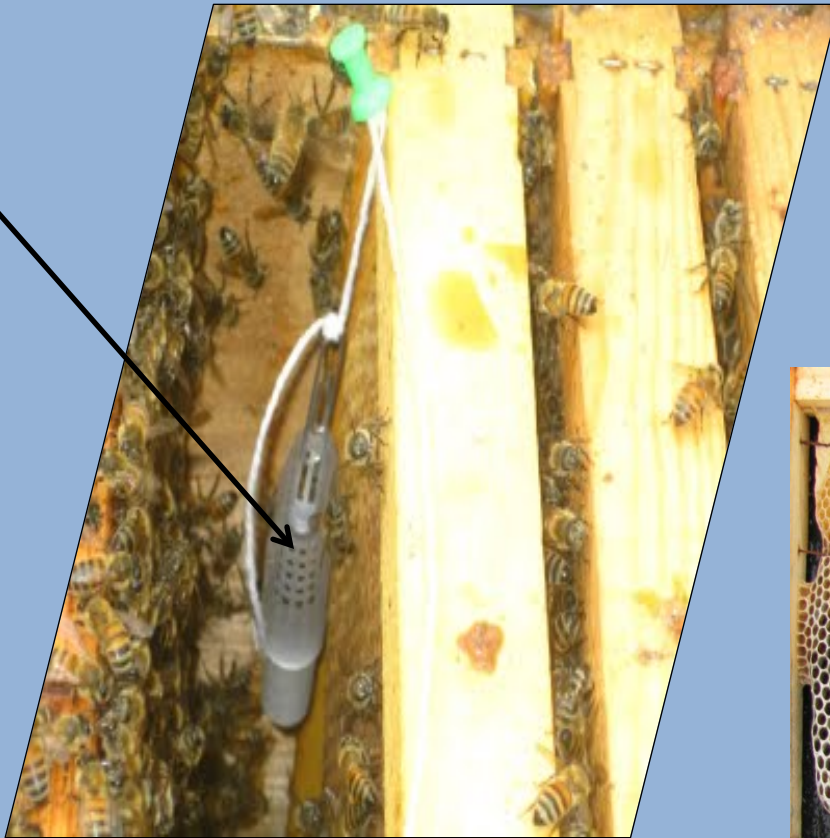
- Take a frame of brood from the established hive; brush any bees on the frame back into the hive
- Place that frame into the new empty hive
- Place the box with the attached queen excluder on top of the new hive with the single brood frame
- Now take the remaining frames and brush all the bees off them into the box with the queen excluder.
- The nurse bees will go down through the queen excluder and into the new box while the field bees will fly back to the old location.
- The queen will try to get through the excluder but can't.

There she
is !

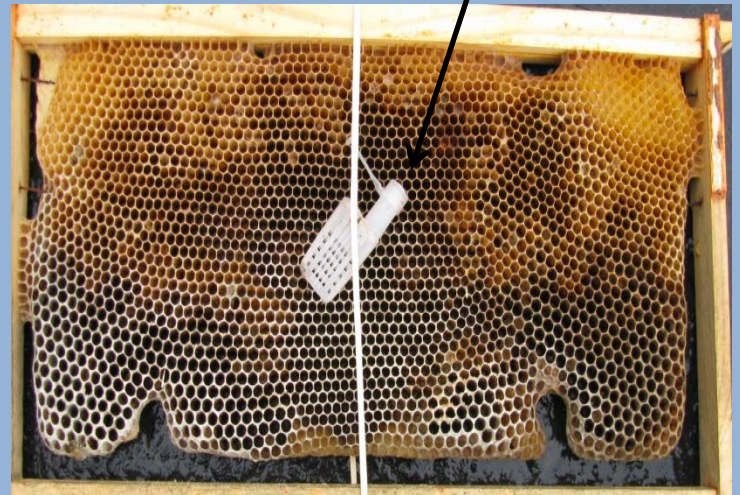


#2 Place purchased caged queen into the hive

Wrong



Right



Bennet or California style using rubber band



California style



Step 2: Place queen raised yourself into new hive



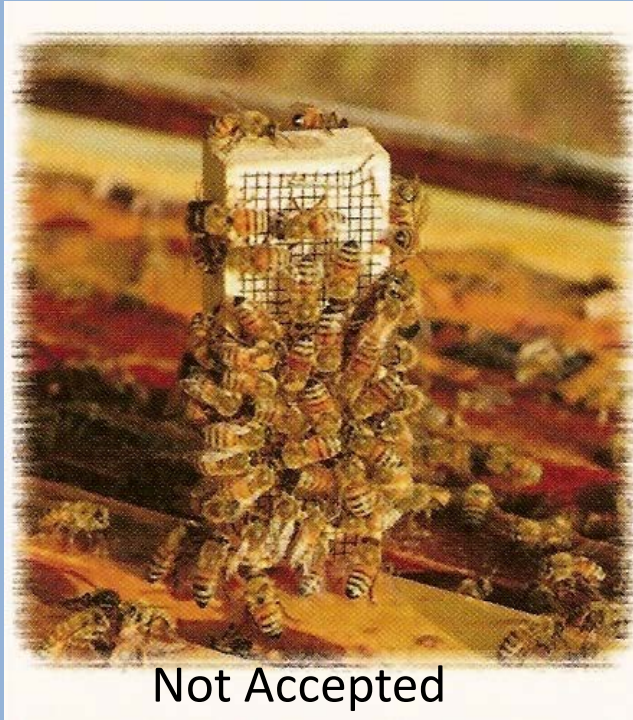


Step #3 Feed the hive to sweeten their mood

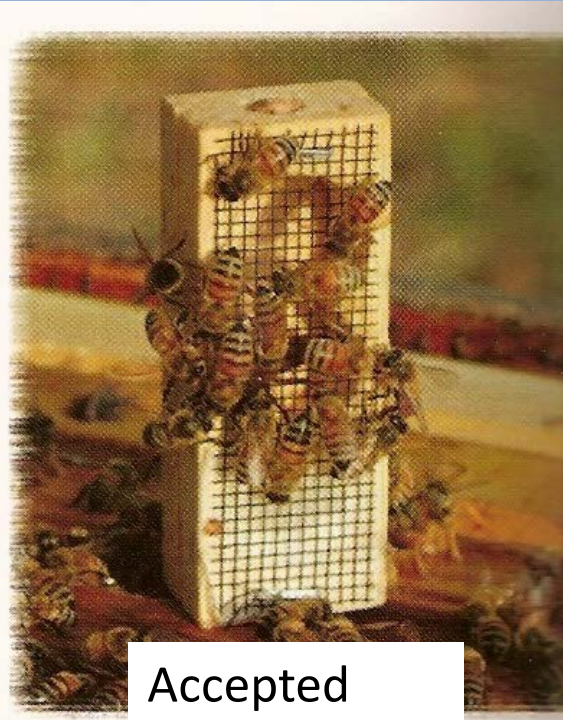




Step 4: On day 3 verify that the queen has been accepted



Not Accepted



Accepted

Feed hive during introduction and for several days after release
even during a honey flow

Check for supercedure queen cells on day 3



- Bees have not accepted the new queen
- Supercell cells will be found in the center of the frame
- Usually one or two cells



Step 5: On day 5

- Recheck for queen cells
- Check to see that the bees are “playing nice” with the queen; i.e., not trying to suffocate her
- If it looks like the queen is still not accepted, look for evidence; i.e., eggs, of another queen present in that box
- If all is well, remove the masking tape or candy cap: DO NOT poke a hole in the candy



Step 6: On day 8

- Verify that the queen has been released (the cage is empty)
- Remove cage and replace the removed frame if necessary
- **DO NOT BOTHER THE HIVE for two weeks**

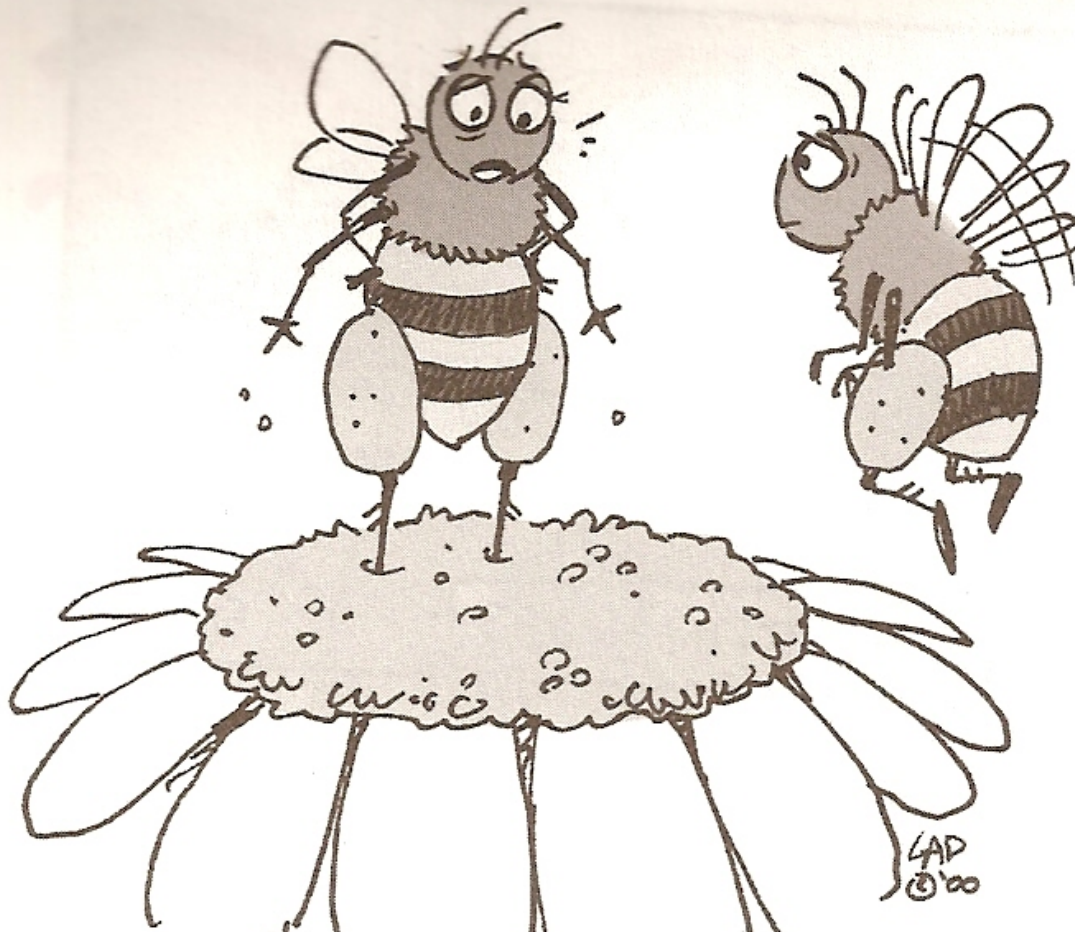
Feed hive during introduction and for several days after release
even during a honey flow



Step 7: Take a deep breath, relax and don't BUG the bees



To help you get through this difficult 2 week waiting period look for bees bringing in pollen



Tell me honestly, does this pollen
make my thighs look too fat...?

How do you know the new queen's coup was successful?



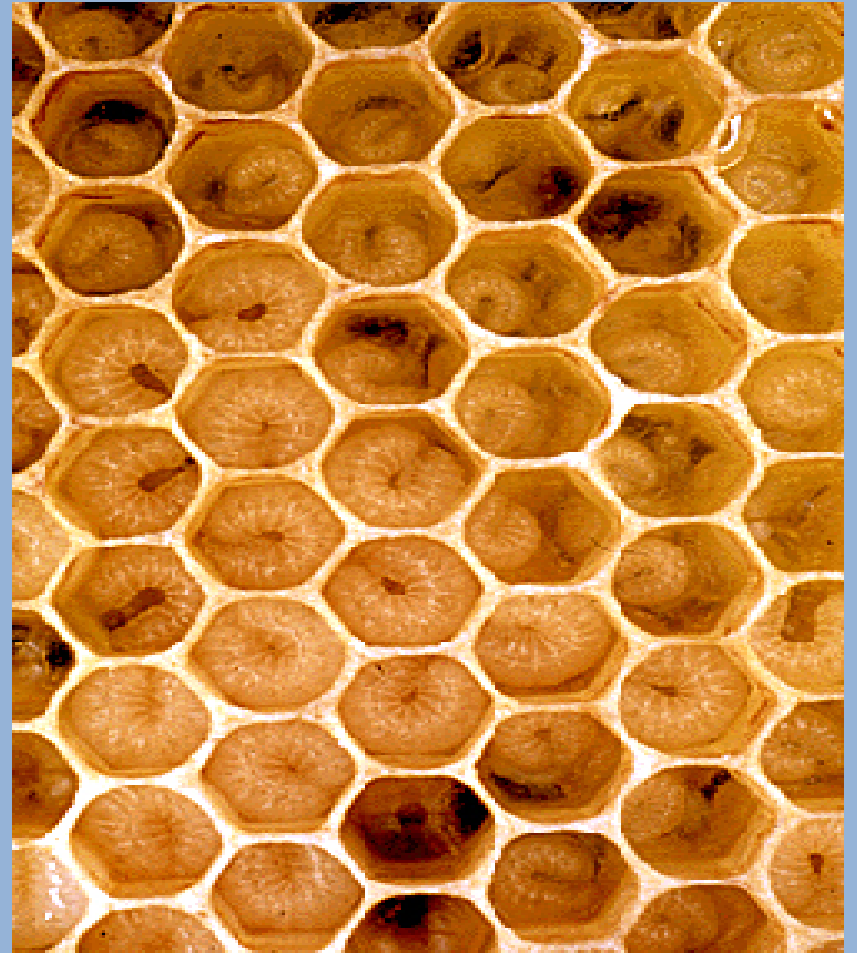
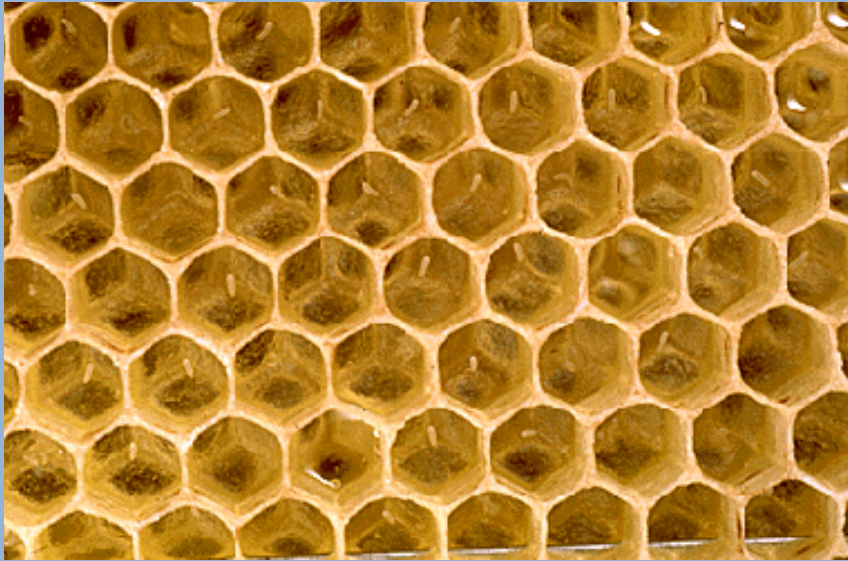
Step 8: NOW you can check for brood
after two weeks of waiting



Continue to feed



Queen Right: eggs & larvae



I have to do WHAT with the old queen!



“Sure fire” method for introducing high value queens



- Sometime you may purchase a breeder queen (think very expensive)
- There is a “sure fire” technique that can be used to introduce her
- It is more work but it comes with a higher percentage of acceptance

Protocol for “Sure Fire” Introduction of Royalty



Don't forget to feed both the nuc and the colony!

Day 1

- Make small 3 frame nuc from colony to be re-queened (this will leave a space in this colony)
- Cover candy end of caged queen and place between frames of brood in nuc
- Place nuc over double screen on top of colony being re-queened

Day 6

- 5 days later remove tape or candy cap from queen cage

Day 16

- 10 days later dispatch old queen

Day 17

- 1 day later remove double screen and replace it with single sheet of newspaper

Day 24

- One week later refill cavity in colony with frames from nuc

Success!



Long Live the Queen



The End

Questions?



(c) Kathy Keatley Garvey