



Types of Wasps

Asian Hornet



Yellow Jacket Queen



History

non-native
introduced
1845

NOT A BEE!



Bald-faced Hornet *Dolichovespula maculata*

NOT A BEE!

non-native
introduced 1850's



European Hornet *Vespa crabro*

non-native
introduced
1975's

NOT A BEE!



German Yellowjacket - *Vespula germanica*

NOT A BEE!

non-native
introduced 1970's



European Paper Wasp
Polistes dominula

non-native
introduced in
Oregon 1850's



Honey Bee
Apis mellifera

BEE

0.5 inch
1.25 cm



Common Eastern Bumblebee *Bombus impatiens*

BEE

native

Types of Wasps

Yellowjackets



Scavengers

Paper wasps



Predators

Mud Dauber



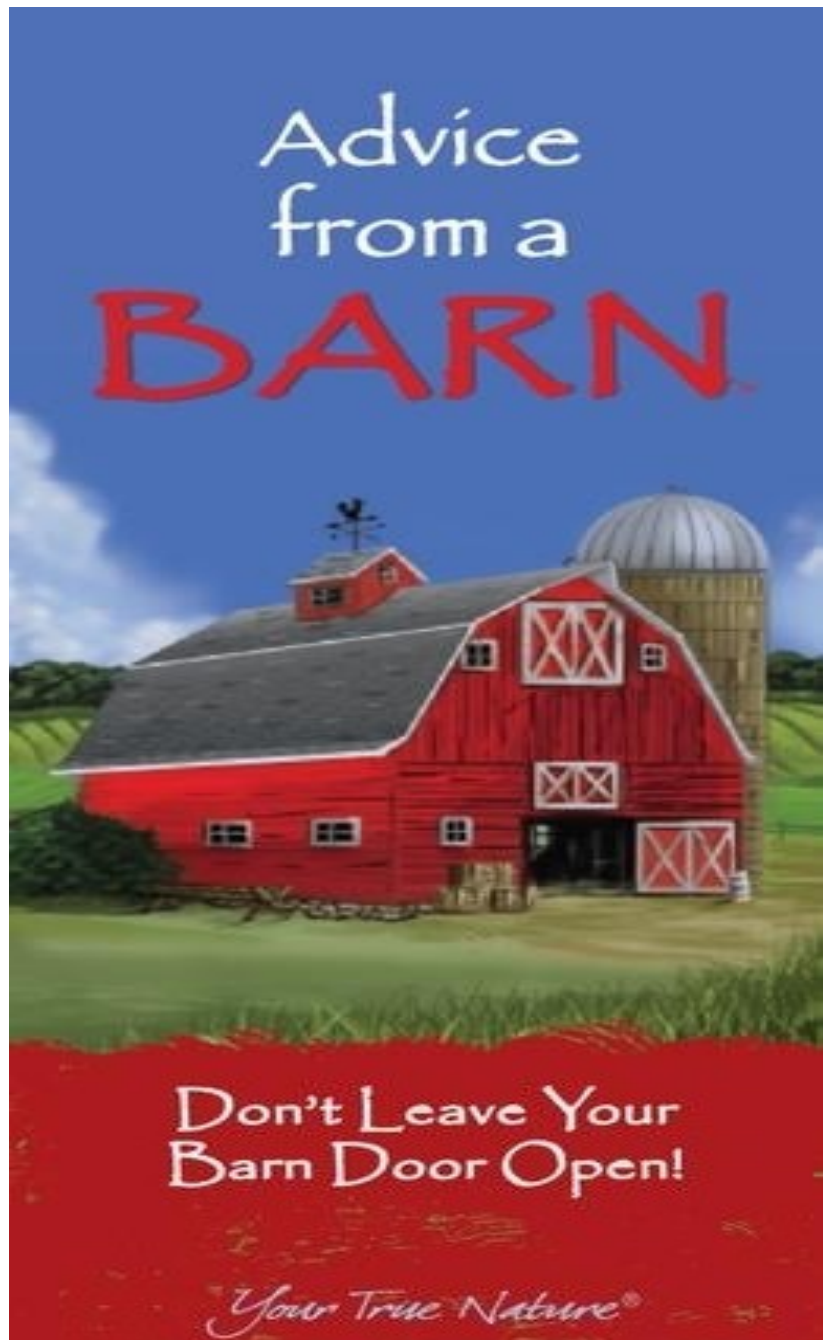
Nest



Use a foaming spray on ground nest & above ground nests

No Longer Available





**Yellow Jacket control is
year around.**

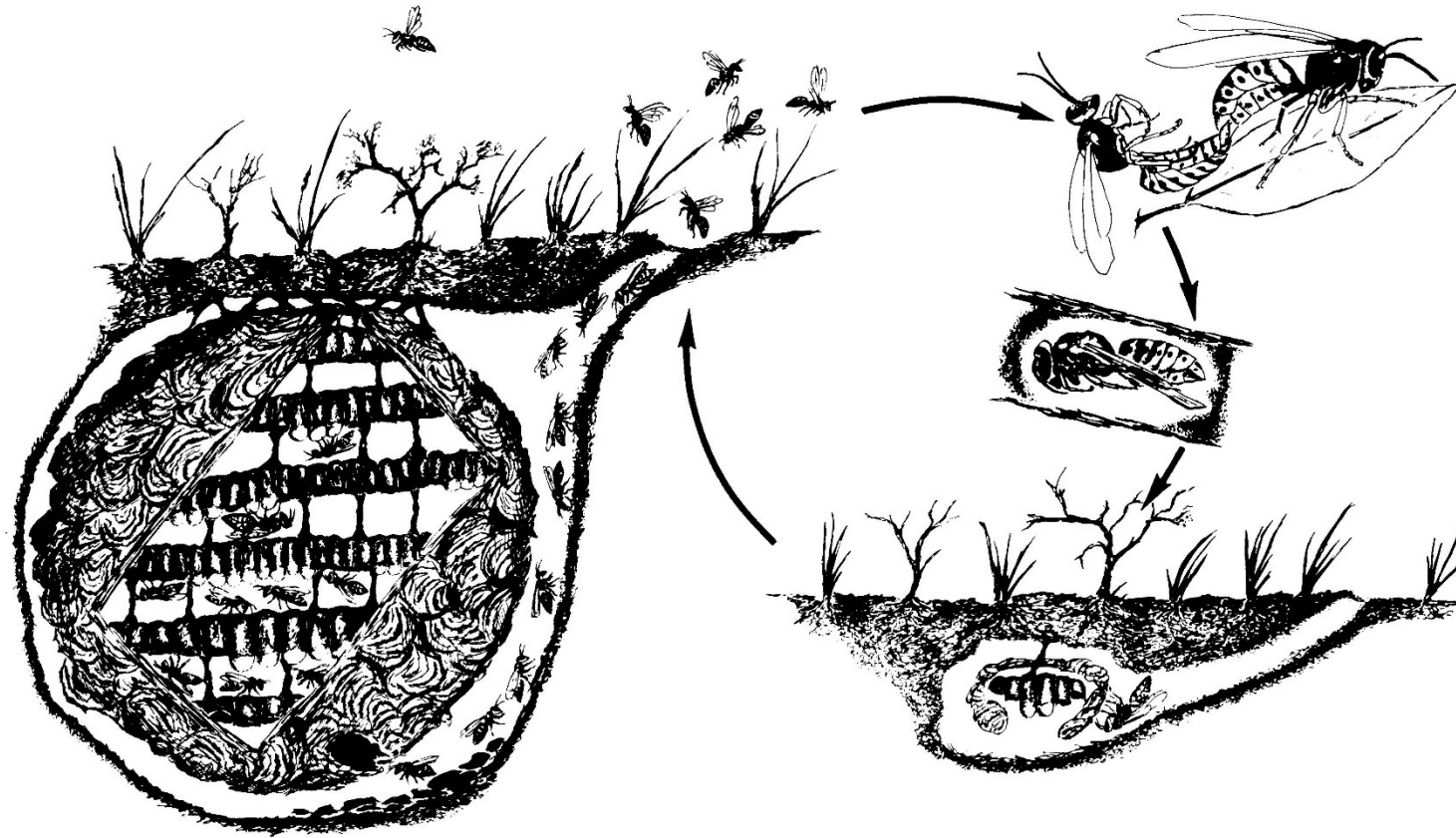
**If you wait until you see
workers around your hives
you left the barn door open.**

**Trap queens in fall and
spring, use bait traps when
workers are seen.**

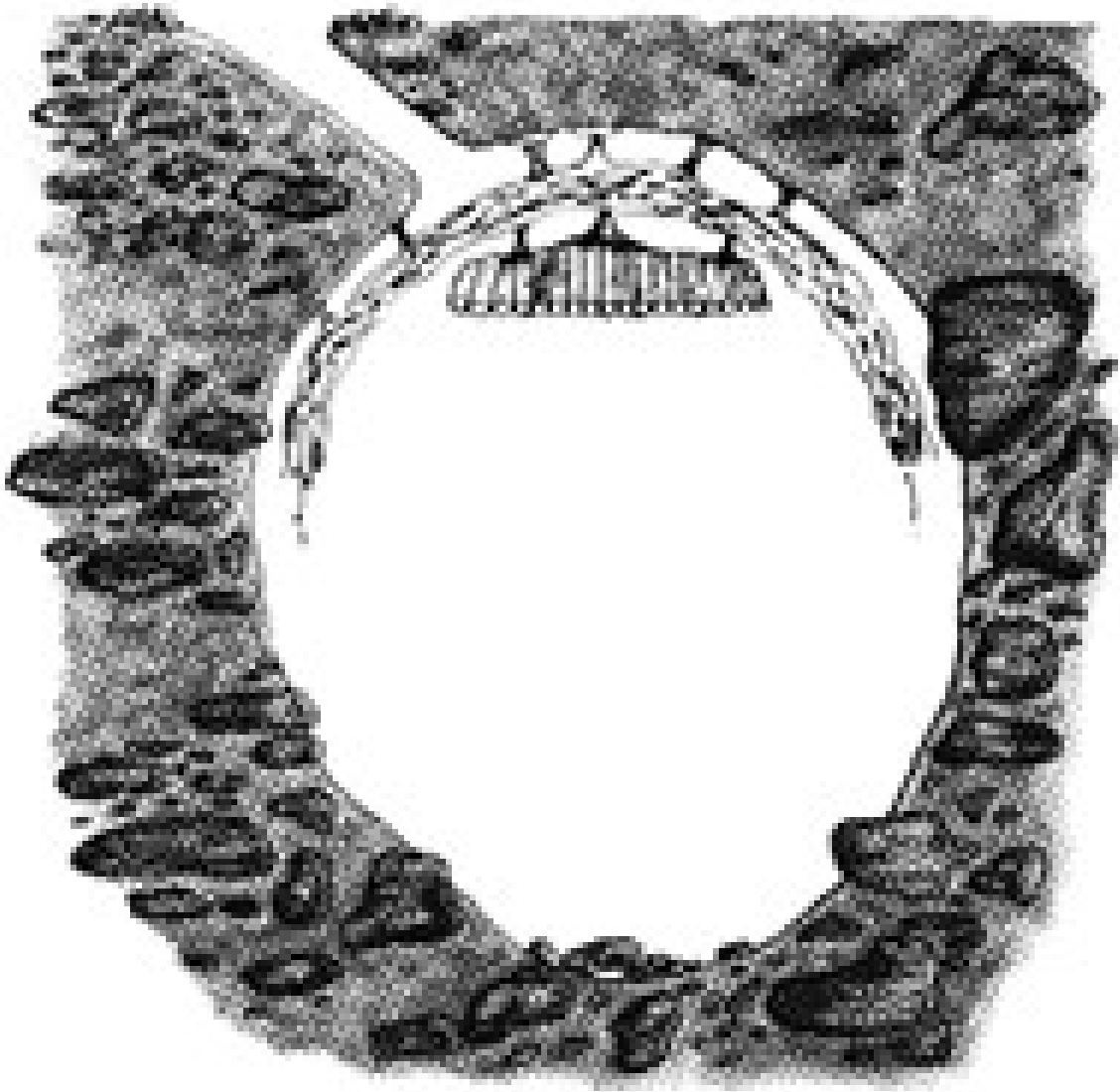


Brood Cycle

Life Cycle



Early Spring



Yellow Jacket queens will emerge from hibernation after 60 – 65 degrees daytime temperatures and seek out a nesting site. She must build the nest lay eggs and feed larvae until enough workers emerge to take on duties.

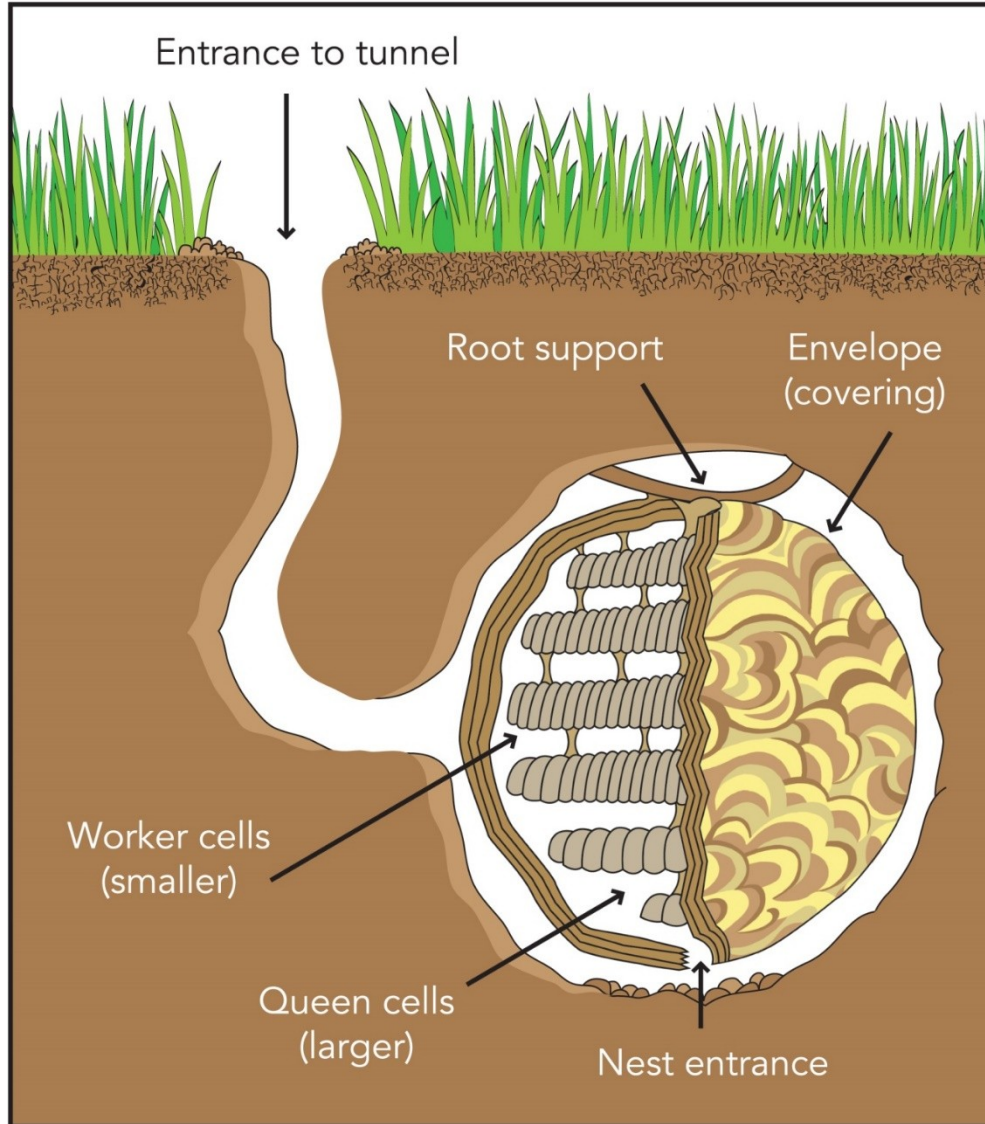
Mid Summer



Once enough workers have hatched the queen will remain in the nest and lay eggs.

Building nest to several thousand .

Late Summer



Late summer she will lay male eggs and then many fertile female eggs which will become queens.

They will mate, fatten up and find a place to hibernate until next spring when the cycle will start over.

Tools



One cup liquid detergent
to one gallon water



Queen Traps





May 15



June 12



July 28th

Summer traps

Check water level refill as needed.
Each ½ inch of wasps equals 300



Most of the workers in a nest are scavengers, placing this trap near the ground will attract many more than placing high off ground like what you do when attracting queens.



Poison bait traps



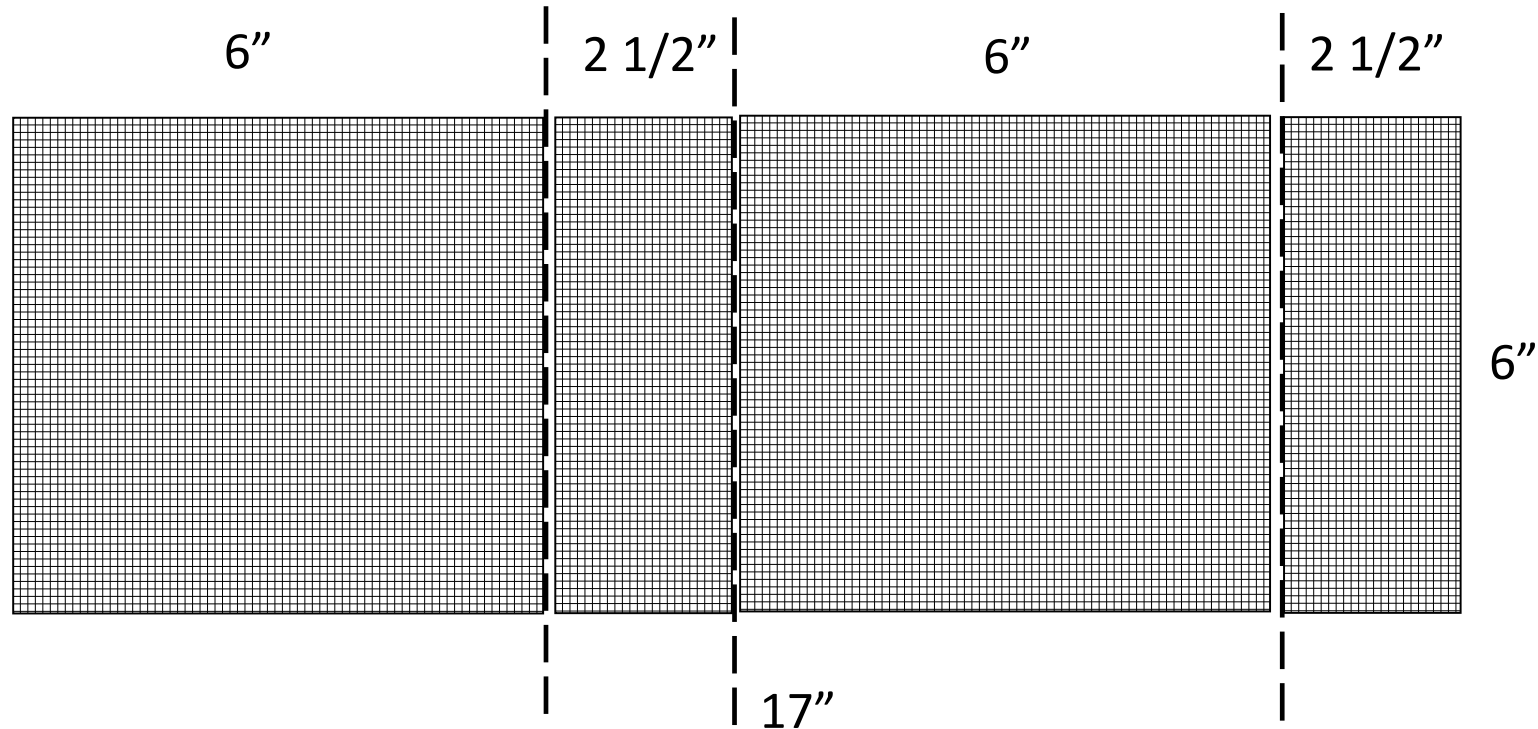
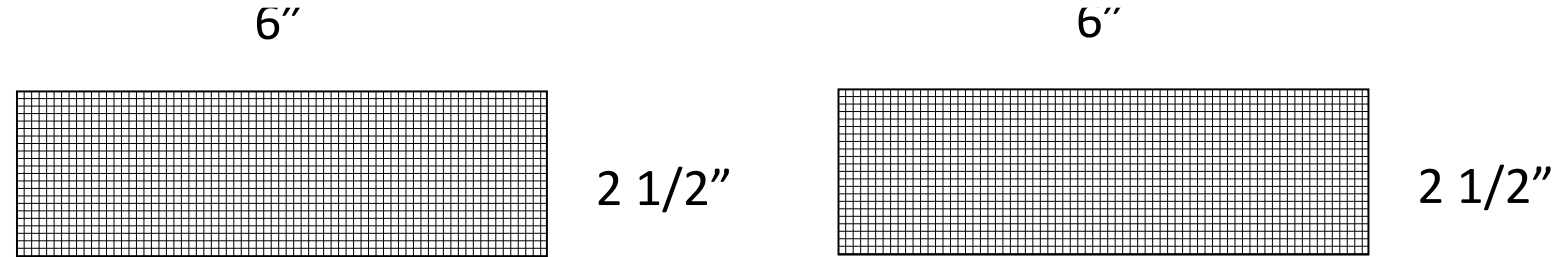
http://www.livingwithbugs.com/yellowjacket_bait.html

Mix .55 cc of Onslaught pesticide to can of chicken or whitefish cat food.

I have found the pate form of cat food works best.



Poison bait traps made from $\frac{1}{2}$ hardware cloth



Happy hunting

